



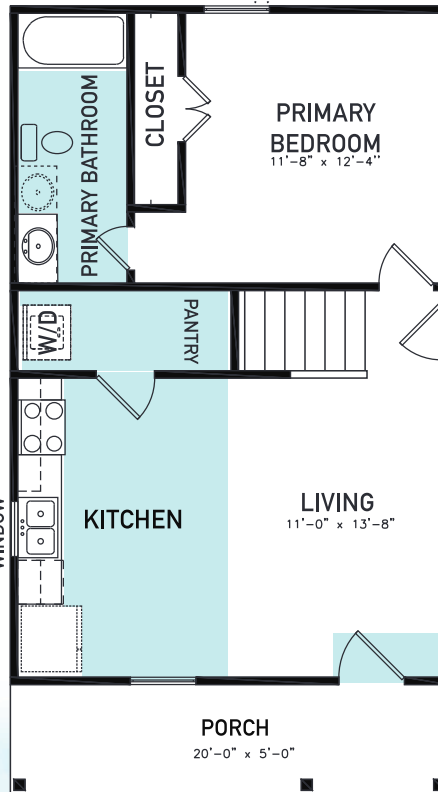
MARIE VILLAGE

AN ASGi HOMES NEIGHBORHOOD

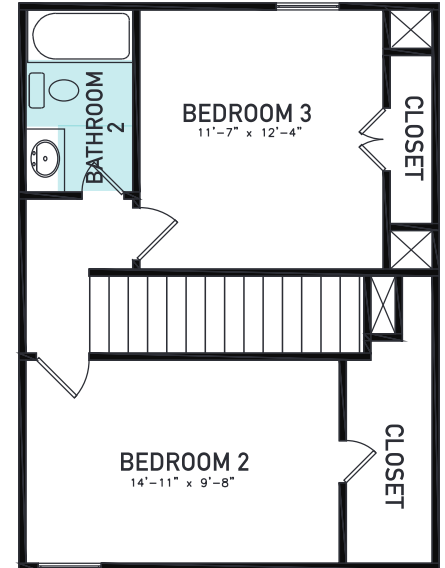
Joanna

PLAN 1108

- 1,108 sq. ft.
 - 3 Bedrooms
 - 2 Bathrooms
 - Utility/Pantry Room
 - Open Concept
 - Living Room and Dining Area adjacent
 - Gourmet Galley Kitchen
 - Dishwasher Included
 - Primary Suite on First Floor
 - Large Front Porch Area
- Optional:
- Kitchen Window
 - Dual Sink Vanity in Primary Bathroom



FIRST FLOOR PLAN



SECOND FLOOR PLAN



ASGiHOMES.com

Let's get Social



©Apr., 2023 ASGi Homes. All rights reserved. Specifications are subject to change without notice. Elevations may vary. Square footages and room sizes area approximate. All information (including, but not limited to prices, availability, incentives, floor plans, site plans, features, standards and options, assessments and fees, planned amenities, programs, conceptual artists' renderings and community development plans) is not guaranteed and remains subject to change or delay without notice. Maps and plans are not to scale and all dimensions are approximate. Please see an ASGi Homes sales associate for details. 4/23

