



# MARIE VILLAGE

AN ASGi HOMES NEIGHBORHOOD

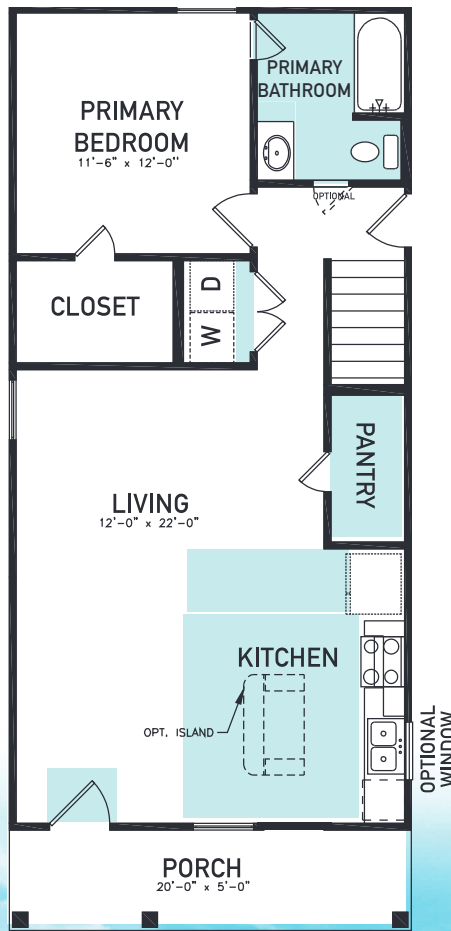
## Jonathan

PLAN 1200

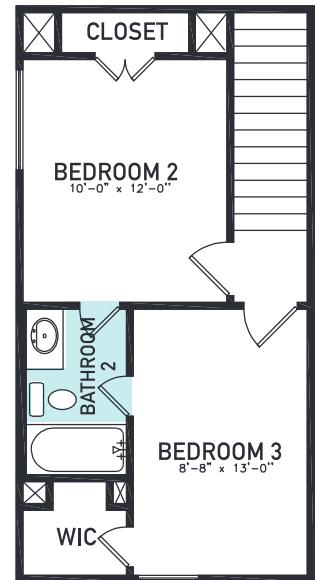
- 1,200 sq. ft.
- 3 Bedrooms
- 2 Bathrooms
- Utility Closet
- Large Pantry
- Living Room and Dining Area adjacent
- Gourmet Eat In Galley Kitchen
- Dishwasher Included
- Primary Suite at rear of home
- Large Front Porch Area

### Optional:

- Kitchen Island
- Kitchen Window
- Primary Bath Door



**FIRST FLOOR PLAN**



**SECOND FLOOR PLAN**



ASGiHOMES.com

Let's get Social



©Apr., 2023 ASGi Homes. All rights reserved. Specifications are subject to change without notice. Elevations may vary. Square footages and room sizes area approximate. All information (including, but not limited to prices, availability, incentives, floor plans, site plans, features, standards and options, assessments and fees, planned amenities, programs, conceptual artists' renderings and community development plans) is not guaranteed and remains subject to change or delay without notice. Maps and plans are not to scale and all dimensions are approximate. Please see an ASGi Homes sales associate for details. 4/23

